



# STARTER PACK

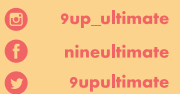




# ABOUT US



[www.9upultimate.com](http://www.9upultimate.com)



9up\_ultimate

nineultimate

9upultimate

## HISTORY & PRODUCTION

**This is not a typical sportswear company.**

**It's more a group of Ultimate addicted friends not satisfied with just playing and that wanted to make Ultimate an important part of their everyday life.**

**9UP Ultimate was timidly born from a dream of two Italian players, Moreno Scalise & Luigi Taborelli. We wanted to offer high quality products with affordable prices together with a fast and friendly service, something that was missing in Italy until then.**

**We're based in Como, a region historically known for its weaving culture; sometimes we feel we're continuing an old tradition.**

**In 2014 the creation of the brand, followed by a broad market analysis, led us to establish a close relationship with an important supplier in Como, which produces and sells, exclusively for nineup, all the clothing inherent to the sport of Ultimate.**

**In 2015 we added a new member to the team, Alessandro Somaini, a former Italian national player with great experience in the Ultimate world.**

**Our early sales network was made mostly of friends and game opponents, now we have many customers, and new friends, all over Europe, including five national federations over the years.**

**We only produce fully customizable sublimated sportswear.**

**We can count on 6 operating plotters, a continuous calendar (able to transfer 180 cm wide fabrics, that allows to print XXL sizes), and a fantastic team of specialized technicians and graphics specialists.**

**All our products are 100% made in Italy, from the white fabric to the final jersey.**

## MISSION

**Product quality, constant innovation and care in customer service are the ingredients that have allowed us to become an international reality in the creation and distribution of Ultimate sports clothing. The satisfaction and trust of each customer push us, every single time, to continue this journey.**

**As Ultimate players ourselves we're really close to the needs of the teams and every day we work side by side with them to create the best solutions, researching and developing materials, processes and technologies capable of creating innovative and reliable products.**

**We strongly believe in the Ultimate growth, we help and encourage it whenever we can, supporting juniors and women movements (i.e. MUD project in Italy) and promotion media (i.e. Get Big documentary).**

**Doing business into the Ultimate community it's a different game: our customers are also our friends, team mates, opponents, people we feel really close to, people with which we share the same passion and the same great desire to make Ultimate bigger and bigger. We really hope to make our contribution to that.**

## SUSTAINABLE PRODUCTS

**We know that our business activity – from powering factory to dyeing shirts – creates pollution as a by-product. So we are committed to reduce those harms. We've always avoided unnecessary plastic packaging and recently we are using a new one-hundred-percent recycled polyester as a fabric for our clothes.**

**We were looking for a more sustainable system, one that uses fewer resources, discards less and better protects people's health.**

**We found an answer in Newlife™: it's a unique, complete and certified system of recycled polyester filament yarns coming one-hundred-percent from post-consumer bottles sourced, processed into a polymer through a mechanical process, not chemical, and spun into yarn completely in Italy. We can offer now recycled polyester in all our garments (t-shirts, shorts, long sleeves, tank tops, light hoodies, etc.)**

**Staying true to our core values during these first years in business has helped us create a brand we're proud to run and work for.**




**Our new focus on making sustainable products allows us to provide a better and fairer service to the Ultimate community.**



# FABRICS

nineup

[www.9upultimate.com](http://www.9upultimate.com)

 9up\_ultimate  
 nineultimate  
 9upultimate



## **SILKYWAY**

**This fabric maximizes the transmission of moisture from the skin to the outer surface of the garment.**

**At the same time, the unique structure makes the fabric more breathable and soft, comfortable, keeping the fabric and skin dry therefore giving the feeling of health and comfort.**

**Its smoothness enhances the appearance of any artwork and improves wearability.**

**Light and Comfortable**

**Dry-Comfort and Breathable**

**High Moisture Absorbency and Quick Drying**

**Smooth like silk**

**Polyester 91%, Elastan 9% Weight 160 g/m<sup>2</sup>**



## **LINFA**

**Linfa is our newest fabric, 100% made of recycled polyester!**

**From the amazing Newlife™ project: a unique, complete and certified system of recycled polyester filament yarns coming one-hundred-percent from postconsumer bottles sourced, processed into a polymer through a mechanical process, not chemical, and spun into yarn completely in Italy, thanks to an exclusive horizontal partnership agreement.**

**The consolidated know-how of Sinterama combined with its ceaseless research towards responsible innovation and its complete and patented process behind this one hundred percent Made in Italy project, make Newlife™ an incredibly flexible platform that allows for a vast number of applications and performances with levels of quality equal to virgin polyester equivalents, but with considerable resource and cost savings for the environment, just to name a few: fashion, sportswear, underwear, technical clothing, workwear, medical garments, outdoor clothes, furnishings, accident prevention textiles. Newlife™ is developed and produced to stand out for design, high performance, high quality and total respect for the environment.**

**Recycled Polyester 100% - Weight 120 gr/m<sup>2</sup>**



## K2

**Resistex® Carbon comes from laboratories researches at Technofilati, a textile company specialized in producing high-tech yarns for sports, protective and well-being wear. It is a yarn by unique technical characteristics, consisting of a continuous filament of conductive material based on active carbon and textile fibres.**

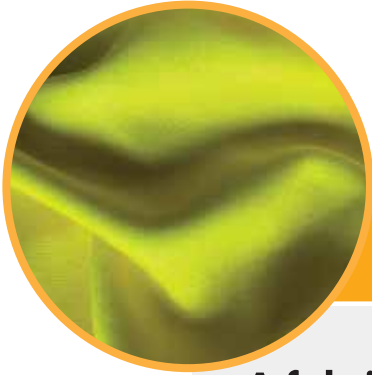
**Thanks to Resistex® Carbon a regular piece of clothing can be turned into an ally capable of improving any performance.**

**Multifilament polyester fabric with a micro-line structure is ideal for high-performance sports, both indoors and outdoors and boasts a high degree of resistance and breathability. It increases the efficiency of technical sportswear increasing muscular performances of the athlete: basically, it delays the onset of fatigue during exercise.**

**Bi-stretch polyester is made of ultra-light carbon fibre, resistant to wear and tear, embellished by a checked motif and the many colour options available.**

**Polyester 74%, elastan 19%, carbon resistex® 7% - Weight 135 g/m<sup>2</sup>**

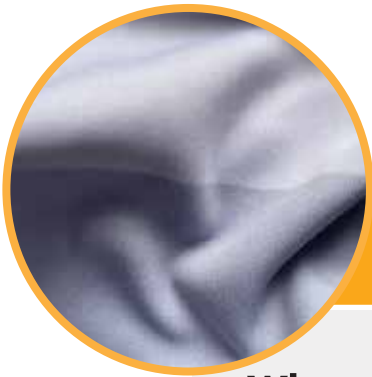




## **MAGNESIUM**

**A fabric similar to Silkyway but less elastic and a little more rigid, specifically designed for our Light Hoodies and female Shorty Shorts.**

**Polyester 100% - Weight 158 gr/m<sup>2</sup>**



## **CARAPACE**

**When you need protection from wind and cold or you just want to keep you ready for the action.**

**Specifically designed for our Hoodies and Track Pants.**

**Polyester 100% - Weight 250 gr/m<sup>2</sup>**

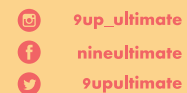


# PRICES

All products' pictures are available on our social media:  
<https://www.facebook.com/nineupultimate/shop>



[www.9upultimate.com](http://www.9upultimate.com)



	 <b>SILKYWAY</b>	 <b>LINFA</b>	 <b>K2</b>	 <b>MAGENSIUM</b>	 <b>CARAPACE</b>
<b>Kit</b> <b>(2 jerseys &amp; 1 shorts)</b>	<b>€70,00</b>	<b>€75,00</b>	<b>€75,00</b>	<b>n.a.</b>	<b>n.a.</b>
<b>Jersey</b>	<b>€27,00</b>	<b>€28,00</b>	<b>€28,00</b>	<b>n.a.</b>	<b>n.a.</b>
<b>Long Sleeve</b>	<b>€33,00</b>	<b>€34,00</b>	<b>€34,00</b>	<b>n.a.</b>	<b>n.a.</b>
<b>Tank Top</b>	<b>€22,00</b>	<b>€23,00</b>	<b>€23,00</b>	<b>n.a.</b>	<b>n.a.</b>
<b>Reversible Tank Top</b>	<b>n.a.</b>	<b>n.a.</b>	<b>€33,00</b>	<b>n.a.</b>	<b>n.a.</b>
<b>Light Hoodie</b>	<b>n.a.</b>	<b>€37,00</b>	<b>n.a.</b>	<b>€36,00</b>	<b>n.a.</b>
<b>Full Zip Hoodie</b>	<b>n.a.</b>	<b>n.a.</b>	<b>n.a.</b>	<b>n.a.</b>	<b>€42,00</b>
<b>3/4 Zip Sweatshirt</b>	<b>n.a.</b>	<b>n.a.</b>	<b>n.a.</b>	<b>n.a.</b>	<b>€40,00</b>

	 <b>SILKYWAY</b>	 <b>LINFA</b>	 <b>K2</b>	 <b>MAGENSIUM</b>	 <b>CARAPACE</b>
<b>Long Tights</b>	<b>€25,00</b>	<b>n.a.</b>	<b>n.a.</b>	<b>n.a.</b>	<b>n.a.</b>
<b><sup>3</sup>/<sub>4</sub> Tights</b>	<b>€23,00</b>	<b>n.a.</b>	<b>n.a.</b>	<b>n.a.</b>	<b>n.a.</b>
<b>Shorts</b>	<b>€22,00</b>	<b>€23,00</b>	<b>€23,00</b>	<b>n.a.</b>	<b>n.a.</b>
<b>Men's Shorty Shorts</b>	<b>€22,00</b>	<b>€23,00</b>	<b>€23,00</b>	<b>n.a.</b>	<b>n.a.</b>
<b>Women's Shorty Shorts</b>	<b>n.a.</b>	<b>€23,00</b>	<b>n.a.</b>	<b>€22,00</b>	<b>n.a.</b>
<b>Track Pants</b>	<b>n.a.</b>	<b>n.a.</b>	<b>n.a.</b>	<b>n.a.</b>	<b>€33,00</b>
<b>Neck Warmer</b>	<b>€5,50</b>	<b>n.a.</b>	<b>n.a.</b>	<b>n.a.</b>	<b>n.a.</b>
<b>Arm-sleeve</b>	<b>€4,50</b>	<b>n.a.</b>	<b>n.a.</b>	<b>n.a.</b>	<b>n.a.</b>

	 <b>SILKYWAY</b>	 <b>LINFA</b>	 <b>K2</b>		<b>PRICE</b>	<b>FABRIC</b>
<b>Junior Kit</b> (2 jerseys & 1 shorts) (from 10 to 14 years)	<b>€57,50</b>	<b>€57,50</b>	<b>€57,50</b>	<b>155x150 Flag</b>	<b>€18,00</b>	<b>PONGE</b>
<b>Baby kit</b> (2 jersey & 1 shorts) (under 10)	<b>€44,00</b>	<b>€44,00</b>	<b>€44,00</b>	<b>Reversible Beanie</b>	<b>€10,00</b>	<b>ASTANA</b>
<b>Junior Jersey</b>	<b>€22,00</b>	<b>€22,00</b>	<b>€22,00</b>	<b>Headband</b>	<b>€4,50</b>	<b>SPONGE</b>
<b>Baby Jersey</b>	<b>€16,50</b>	<b>€16,50</b>	<b>€16,50</b>	<b>Wristband</b>	<b>€2,00</b>	<b>SILKYWAY</b>
<b>Junior Shorts</b>	<b>€16,50</b>	<b>€16,50</b>	<b>€16,50</b>	<b>Disc Bag</b>	<b>€22,00</b>	<b>RESINATO</b>
<b>Baby Shorts</b>	<b>€11,00</b>	<b>€11,00</b>	<b>€11,00</b>	<b>Drawstring Bag</b>	<b>€7,50</b>	<b>PANAMA</b>



# SIZE CHART

nineup

[www.9upultimate.com](http://www.9upultimate.com)




 9up\_ultimate  
 nineultimate  
 9upultimate

Photo courtesy of Claudio Fasetti



## LEGEND

- 1** Chest
- 2** Body length
- 3** Sleeve length
- 4** Waist
- 5** Inseam
- 6** Leg length

## DESCRIPTION

- Measure across - under the arm holes**
- Measure straight from top of the neck to bottom of jersey**
- Measure straight from top of the shoulder to the wrist**
- Measure across - on the elastic**
- Measure from bottom of the crotch to the end of the leg**
- Measure from the waist elastic to the end of the leg**

## SIZING KEY NOTES

- The following are standard garment measurements, not body measurements.
- All measurements are in centimeters.
- How to measure: lay the garment as flat as possible and take note of where the illustration shows to measure.
- Please note that due to the nature of our handmade products there may be a little variance on sizing. Of course if you think there is a real sizing issue with one of our products don't hesitate to contact us.

# JERSEY

## MEN

Measures	XXS	XS	S	M	L	XL	XXL
1 - Chest	48.5	50.5	52.5	54.5	56.5	58.5	60.5
2 - Body lenght	66	68	70	72	74	76	78

## WOMEN

Measures	XXS	XS	S	M	L	XL	XXL
1 - Chest	44.5	46.5	48.5	50.5	52.5	54.5	56.5
2 - Body lenght	62	64	66	68	70	72	74

## KID

Measures	3 years old	4 years old	6 years old	8 years old	10 years old	12 years old	14 years old
1 - Chest	30	32	36	38	42	45	48
2 - Body lenght	42	44	48	52	56	60	64



# LONG SLEEVE

## MEN

Measures	XXS	XS	S	M	L	XL	XXL
1 - Chest	48.5	50.5	52.5	54.5	56.5	58.5	60.5
2 - Body lenght	66	68	70	72	74	76	78
3 - Sleeve lenght	53.5 + 5	55.5 + 5	57.5 + 5	59.5 + 5	61.5 + 5	63.5 + 5	66.5 + 5

## WOMEN

Measures	XXS	XS	S	M	L	XL	XXL
1 - Chest	44.5	46.5	48.5	50.5	52.5	54.5	56.5
2 - Body lenght	62	64	66	68	70	72	74
3 - Sleeve lenght	48 + 5	50 + 5	52 + 5	54 + 5	56 + 5	58 + 5	60 + 5

## KID

Measures	3 years old	4 years old	6 years old	8 years old	10 years old	12 years old	14 years old
1 - Chest	30	32	36	38	42	45	48
2 - Body lenght	42	44	48	52	56	60	64

**Note: + 5 refers to the dimension of the cuff**

# RAGLAN JERSEY

## MEN

Measures	XXS	XS	S	M	L	XL	XXL
1 - Chest	n.a.	46	48	51	54	57	60
2 - Body lenght	n.a.	67	71	74	77	79.5	82

## WOMEN

Measures	XXS	XS	S	M	L	XL	XXL
1 - Chest	40	42	44	46	48	51	54
2 - Body lenght	57	61	64	67	71	74	77

## KID

Measures	3 years old	4 years old	6 years old	8 years old	10 years old	12 years old	14 years old
1 - Chest	n.a.	n.a.	n.a.	38	40	42	44
2 - Body lenght	n.a.	n.a.	n.a.	52	57	61	64

# TANK TOP

(& reversible)

## MEN

Measures	XXS	XS	S	M	L	XL	XXL
1 - Chest	46	48	50	52	54	56	58
2 - Body lenght	70.5	72.5	74.5	76.5	78.5	80.5	82.5

## WOMEN

Measures	XXS	XS	S	M	L	XL	XXL
1 - Chest	41	43	45	47	49	51	53
2 - Body lenght	65	67	69	71	73	75	77

# SHORTS

## UNISEX

Measures	XXS	XS	S	M	L	XL	XXL
4 - Waist	28	30	32	34	36	38	40
5 - Inseam	22	22.5	23	23.5	24	24.5	25
6 - Leg lenght	51.5	53	54.5	56	57.5	59	60.5

## KID

Measures	4 years old	6 years old	8 years old	10 years old	12 years old	14 years old
4 - Waist	21	22	23	24	25	26
5 - Inseam	13	14	14.5	15	16	17
6 - Leg lenght	35.5	37.5	39.5	41.5	43.5	45

# SHORTY SHORTS

## MEN

Measures	XXS	XS	S	M	L	XL	XXL
4 - Waist	27	29	31	33	35	37	39
5 - Inseam	15.5	16	16.5	17	17.5	18	18.5
6 - Leg lenght	43	44.5	46	47.5	49	50.5	52

## WOMEN

Measures	XXS	XS	S	M	L	XL	XXL
4 - Waist	24	26	28	30	32	34	36
5 - Inseam	10	10.5	11	11.5	12	12.5	13
6 - Leg lenght	30	31.5	33	34.5	36	37.5	39

# LIGHT HOODIE

## MEN

Measures	XXS	XS	S	M	L	XL	XXL
1 - Chest	48.5	50.5	52.5	54.5	56.5	58.5	60.5
2 - Body lenght	66	68	70	72	74	76	78
3 - Sleeve lenght	53.5 + 5	55.5 + 5	57.5 + 5	59.5 + 5	61.5 + 5	63.5 + 5	65.5 + 5

## WOMEN

Measures	XXS	XS	S	M	L	XL	XXL
1 - Chest	44.5	46.5	48.5	50.5	52.5	54.5	56.5
2 - Body lenght	62	64	66	68	70	72	74
3 - Sleeve lenght	48 + 5	50 + 5	52 + 5	54 + 5	56 + 5	58 + 5	60 + 5

**Note: + 5 refers to the dimension of the cuff**

# FULL ZIP HOODIE

## MEN

Measures	XXS	XS	S	M	L	XL	XXL
1 - Chest	48	50	52	54	56	58	60
2 - Body lenght	60 + 5	62 + 5	64 + 5	66 + 5	68 + 5	70 + 5	72 + 5
3 - Sleeve lenght	53.5 + 5	55.5 + 5	57.5 + 5	59.5 + 5	61.5 + 5	63.5 + 5	65.5 + 5

## WOMEN

Measures	XXS	XS	S	M	L	XL	XXL
1 - Chest	44	46	48	50	52	54	56
2 - Body lenght	56 + 5	58 + 5	60 + 5	62 + 5	64 + 5	66 + 5	68 + 5
3 - Sleeve lenght	48 + 5	50 + 5	52 + 5	54 + 5	56 + 5	58 + 5	60 + 5

**Note: + 5 refers to the dimension of the cuff**

# 3/4 ZIP SWEATSHIRT

## MEN

Measures	XXS	XS	S	M	L	XL	XXL
1 - Chest	48.5	50.5	52.5	54.5	56.5	58.5	60.5
2 - Body lenght	66	68	70	72	74	76	78
3 - Sleeve lenght	53.5 + 5	55.5 + 5	57.5 + 5	59.5 + 5	61.5 + 5	63.5 + 5	65.5 + 5

## WOMEN

Measures	XXS	XS	S	M	L	XL	XXL
1 - Chest	44.5	46.5	48.5	50.5	52.5	54.5	56.5
2 - Body lenght	62	64	66	68	70	72	74
3 - Sleeve lenght	48 + 5	50 + 5	52 + 5	54 + 5	56 + 5	58 + 5	60 + 5

**Note: + 5 refers to the dimension of the cuff**



# TRACK PANTS

## MEN

Measures	XXS	XS	S	M	L	XL	XXL
4 - Waist	28	30	32	34	36	38	40
5 - Inseam	68	70	72	74	76	78	80
6 - Leg lenght	99	102	105	108	111	114	117

## WOMEN

Measures	XXS	XS	S	M	L	XL	XXL
4 - Waist	26	28	30	32	34	36	38
5 - Inseam	66	68	70	72	74	76	78
6 - Leg lenght	96	99	102	105	108	111	114

# TIGHTS

## UNISEX

Measures	S	M	L	XL
5 - Inseam	55	59.5	63.5	68
6 - Leg length	75 + 4	81 + 4	87 + 4	92 + 4

# 3/4 TIGHTS

## UNISEX

Measures	S	M	L	XL
5 - Inseam	39	42.5	46	49.5
6 - Leg length	59 + 4	64 + 4	69 + 4	74 + 4

**Note: + 4 refers to the dimension of the band above**



[www.9upultimate.com](http://www.9upultimate.com)



**9up\_ultimate**



**nineultimate**



**9upultimate**